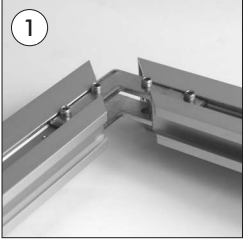
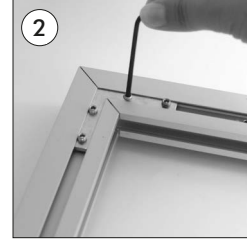
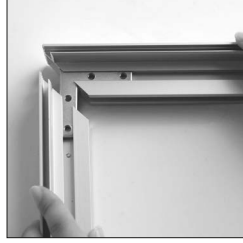
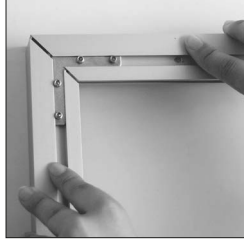


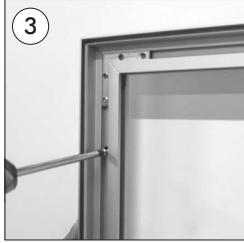
DAME PROFILE / GULF MAXI



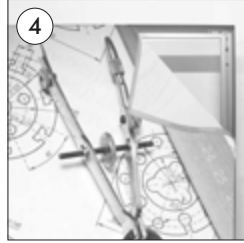
- Align the profile corners.
- Ecken verbinden.
- Tüm köşeleri hizalayarak birleştirin.



- join the profile corners with allen key.
- Schrauben mit dem Imbusschlüssel auf beides Seiten der Eckverbinders festziehen
- Alyan anahtarıyla her iki yönden de sıkarak sabitleyin.



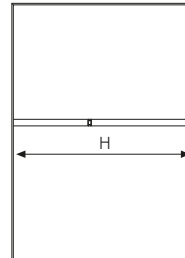
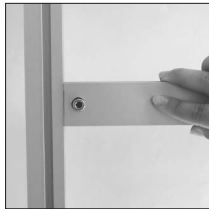
- Fix the frame on the wall through the assembly holes on the profile.
- Fixieren Sie den Rahmen anhand der Montagelöcher an der Wand.
- Kasayı üzerindeki montaj deliklerinden vidalayarak duvara sabitleyin.



- Insert the clear nylon strip, sawn on poster, all around the profile channels
- Die durchsichtige Gummilippe um das Stoffposter nähen, diese in den Kanal einschieben, um das Poster an den Rahmen zu fixieren.
- Posterin fitilli kenarlarını profil üzerindeki kanala takarak. Posteri yerleştirin.



• Assembly of H profile • Das Montieren der Quertraversen • H Profil montajı



- Place the H profile at the long sides of the frame. Tighten the H profile to the frame by allen wrench.
- Befestigen Sie anhand eines Imbusschlüssels die Quertraversen in die Kanäle an den langen Seiten des Rahmens .
- H profili kasa profilinin iki uzun kenarlarındaki kanallara takın. Alyan anahtarıyla sıkarak H profili kasaya sabitleyin.

Assembly of H profile		
Poster	H (Size)	H (Pcs)
1000 X 3000 mm	910 mm	1
1500 X 3000 mm	1410 mm	1
2000 X 3000 mm	1910 mm	2

• Please inform the order number on the product or on the carton (e.g. 1/110001394-460) to the place that you have made the purchase if any problem with the product occurs.
• Bitte teilen Sie bei jeglichen Problemen, die auf dem Artikel oder auf der Verpackung aufgeführte Auftragsnummer (z.B: 1/110001394-460) Ihrem Händler mit.
• Lütfen üründeki herhangi bir sorun için ürünün veya paketin üzerindeki sipariş numarasını (örnek: 1/110001394-460) satın aldığınız yere bildiriniz.

• All rights reserved. All pictures, figures and writings are secured internationally by copy-right law. Infringements will be sued by civil and legal law.
• Alle Rechte vorbehalten. Alle Bilder, Zeichnungen und Texte sind international urheberrechtlich geschützt. Etwaige Zuwiderhandlungen werden zivil-und strafrechtlich verfolgt.
• Tüm hakları saklıdır. Tüm resimlerin, şemaların ve yazıların kopya hakları uluslararası kanunlarla güvence altına alınmıştır. İhlali durumunda sivil ve hukuki yasa mercii tarafından dava edilecektir.



1004753